

AutoCAD Linestyle Installation Instructions

1. Unzip the file acad_lines_AECR5.zip into a temporary directory.

There will be five files found in the acad_lines_AECR5.zip file.

InstallInstructions.pdf (the file you are reading now)

*****NOTE:*****

You can choose which line style you want to load based on the text height in the line style.

Tsaec8.lin - Contains the A/E/C CAD Standard ACAD line styles with 1/8" text height.

Tsaec32.lin - Contains the A/E/C CAD Standard ACAD line styles with 3/32" text height.

Tsaec.shx - Contains the shapes necessary for the line styles to appear correctly.

Tsaec_MLN.shx - Contains the shapes necessary for the line styles to appear correctly.

2. Copy the following files into the ..\Support\ folder under the

AutoCAD root folder. Examples of this path would be (Note: "User" is whatever your username for the computer you are working on):

AutoCAD 2006

C:\Documents and Settings\User\Application Data\Autodesk\AutoCAD
2006\R16.2\enu\Support\

AutoCAD 2009

C:\Documents and Settings\User\Application Data\Autodesk\AutoCAD
2009\R17.2\enu\Support

AutoCAD 2010

C:\Documents and Settings\User\Application Data\Autodesk\AutoCAD
2010\R18.0\enu\Support

The files to copy are:

Tsaec8.lin

Tsaec32.lin

Tsaec.shx

Tsaec_MLN.shx

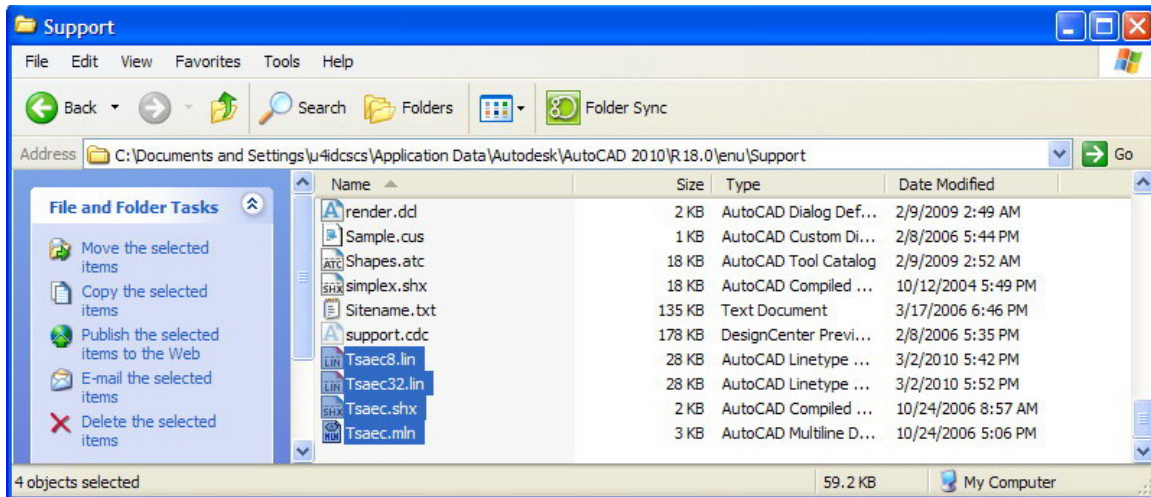


Figure 1 Copy Files into Support Directory (AutoCAD 2010 shown)

3. Start AutoCAD.
4. Create a new drawing or open an existing drawing.
5. Create a new text style using the Arial font. Name the font style ARIAL. Leave the height set to 0.00.

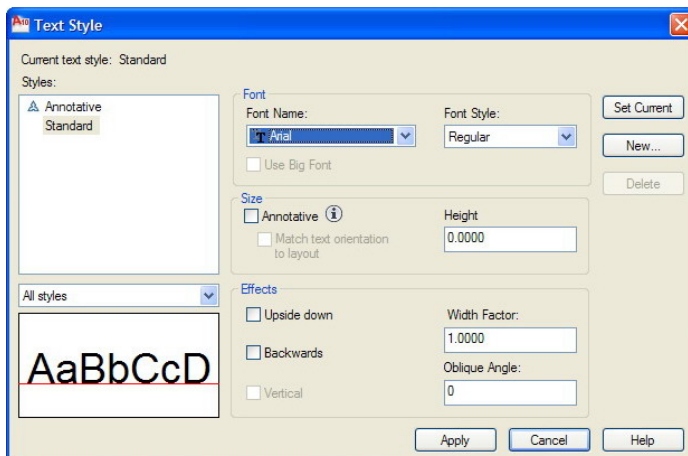


Figure 2 Set Font Name to Arial

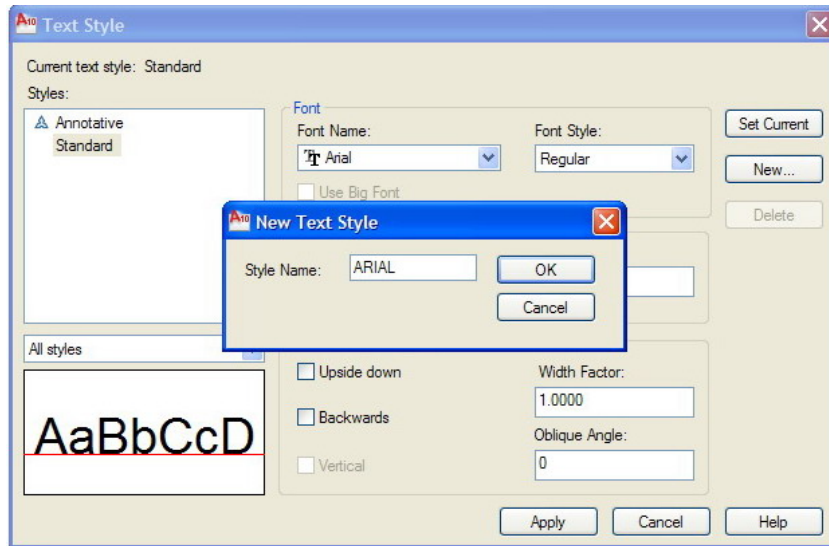


Figure 3 Make new text style called "ARIAL"

6. Load the line styles from the file of your choice Tsaec8.lin or Tsaec32.lin.
 Next load the desired multi-line definition from Tsaec.mln.
 (Note: You must load the necessary line styles from either Tsaec8.lin or Tsaec32.lin
 before loading Tsaec.mln because Tsaec.mln uses line styles
 from Tsaec8.lin or Tsaec32.lin.)

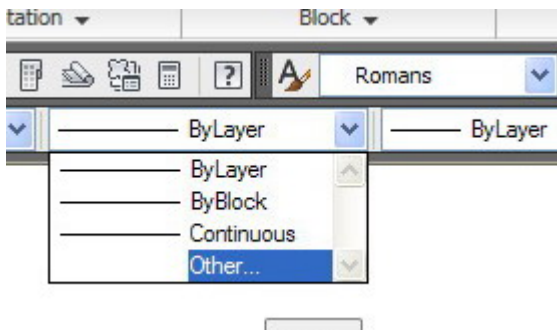


Figure 4 Select "Other" from the list of linestyle

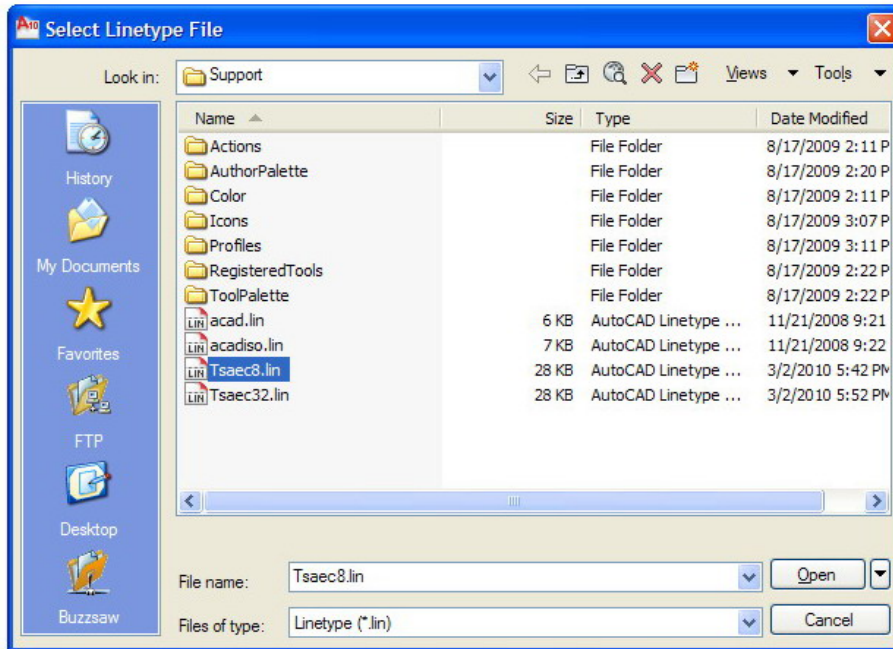


Figure 5 Click Load, then select either Tsaec8 or Tsaec32

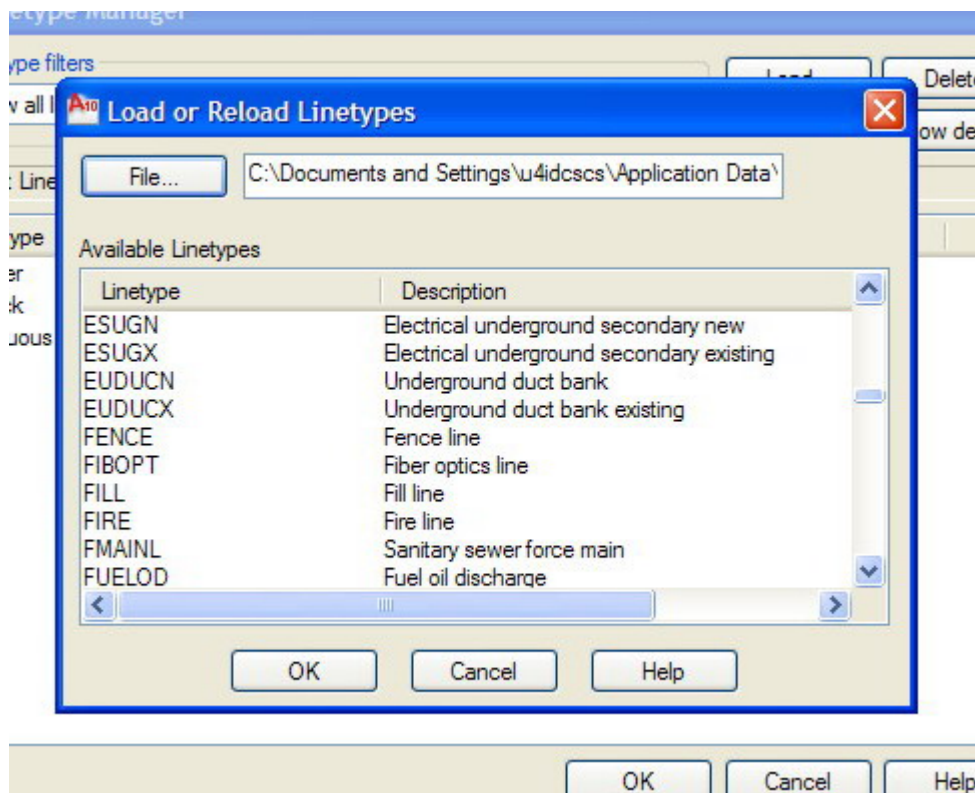


Figure 6 Select which linestyles to load

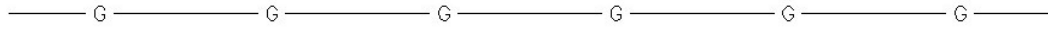


Figure 7 Linestyles selected will now be available for use