

Property Management Department Chapter

The City of Fort Wayne owns number of public and non public buildings. The City will strive to ensure that all residents and visitors are able to access all services, programs and activities offered in City buildings. The City of Fort Wayne through its Property Management Department will promptly investigate any formal grievance filed according to the grievance procedures established by the City of Fort Wayne.

The City of Fort Wayne has prepared a Transition Plan that outlines the necessary steps to be fully compliant with the requirements of Title II of the Americans with Disability Act. A self-evaluation plan began in 2013 for the City of Fort Wayne and its buildings.

The self-evaluation focuses on those areas that are open to the general public. This includes parking lots, walks, pathways and those parts of buildings where the general public has access. A second phase of evaluations will occur in those areas and buildings having infrequent or no public access.

It is the goal of the City of Fort Wayne to make all services, programs and activities offered within City buildings fully accessible in a reasonable amount of time. This will be largely dependent on a number of economical factors and future changes to the ADA Accessibility Guidelines (ADAAG) and Public Rights-of-Way Accessibility Guidelines (PROWAG) or other unforeseen requirements that would necessitate additional improvements to City buildings.

The results of the self-evaluation will identify barriers at City properties. The degree of which these barriers limit accessibility and their priority for corrective action will be subjectively categorized in five (5) levels. Using a grading scale A – F with A having all elements complying with the ADA standards to F having four or more barriers identified. These levels will be used to grade the effectiveness of access to areas providing services, programs and activities offered in City buildings.

The City is also committed to providing training for staff on the requirements of the ADA and to make accommodations for employees with disabilities. The Transition Plan will be reviewed and updated periodically to ensure the City is complying with ADAAG and PROWAG standards, including the seriousness of the barrier, number of barriers, location of barriers, complaints, new regulations, new standards, and availability of funding.

The City of Fort Wayne has established a list of its buildings. This list is labeled as Appendix A – City Buildings. In addition to this list, the City has also compiled aerial photographs of each property. These photographs are available alphabetically in Appendix B –City Photographs.

Contact: Daniel A. Brenner, Property Manager City of Fort Wayne
Citizens Square
200 East Berry Street, Suite 470
Fort Wayne, IN 46802
Phone: (260) 427-
5402 Email: dan.brenner@cityoffortwayne.org

Appendix A

City Facilities

CITY OF FORT WAYNE

Name	Address
ANIMAL CARE AND CONTROL	3020 Hillegas Road
BIO SOLIDS	6100 Lake Avenue
CITIZENS SQUARE	200 E Berry Street
CIVIC CENTER PARKING GARAGE	112 E Washington Blvd
COUNTY PROBATION OFFICE	2211 Fairfield Avenue
FINE ARTS BUILDING	114 E Superior Street
FIRE ACADEMY	2700 Dwenger Avenue
FIRE ENGINE SHOP	305 E Murray Street
FIRE STATION #1	419 E Main Street
FIRE STATION #2	2023 Taylor Street
FIRE STATION #4	4130 Lahmeyer Road
FIRE STATION #5	5801 Bluffton Road
FIRE STATION #6	1500 W Coliseum Blvd
FIRE STATION #7	1600 Lindenwood Avenue
FIRE STATION #8	6035 Rothman Road
FIRE STATION #9	2530 E Pontiac Street
FIRE STATION #10	3110 N Anthony Blvd
FIRE STATION #11	405 E Rudisill Blvd
FIRE STATION #12	6901 S Anthony Blvd
FIRE STATION #13	6727 N Clinton Street
FIRE STATION #14	3400 Reed Road
FIRE STATION #15	1415 Northland Blvd
FIRE STATION #16	11330 Coldwater Road
FIRE STATION #17	1910 Getz Road
FIRE STATION # 18	10805 Liberty Mills Road
FIRE STATION #19	10116 Covington Road
FLEET MANAGEMENT	1705 S Lafayette Street
GRAND WAYNE CENTER	219 W Washington Blvd
HARRISON PARKING GARAGE	1220 S Harrison Street
OLD FIRE STATION # 3	2518 Winter Street
PARVIEW FIELD	1301 Ewing Street
POLICE PROCESSING BUILDING	3220 Ciera Court
RADIO SHOP	1103 E Coliseum Blvd
RIGHT OF WAY	503 Ewing Street
SCIENCE CENTRAL MUSEUM	1950 N Clinton Street
SIGN SHOP	1710 S Lafayette Street
SIGNAL SHOP	1730 S Lafayette Street
SKYLINE PARKING GARAGE	221 W Berry Street

STREET DEPARTMENT	1701 S Lafayette Street
STREET DEPARTMENT COLD MIX BUILDING	510 E Wallace Street
STREET LIGHT OPERATIONS	335 Murray Street
TECH SERVICES TEST LAB	1825 S Lafayette Street
TRANSPORTATION FACILITY	7607 Young Road
WATER FILTRATION PLANT	1100 Griswold Drive
WATER POLLUTION CONTROL LAGOON	2200 Lake Avenue
WATER POLLUTION CONTROL PLANT	2601 Dwenger Avenue
WEIGHTS & MEASURES	307 Murray Street
WPC MAINTENANCE STORAGE	526 E Wallace Street
WPC MAINTENANCE	515 E Wallace Street

Appendix B

City Photographs

Animal Care & Control - 3020 Hillegas Road



Although strict accuracy standards have been employed in the compilation of this map, Allen County does not warrant or guarantee the accuracy of the information shown herein and assumes no liability resulting from any error or omission in this map.

© 2004 Board of Commissioners of the County of Allen
 North American Datum 1983
 State Plane Coordinate System, Indiana East
 Photos and Contours: Spring 2009

Date: 12/11/2012 1" = 100'



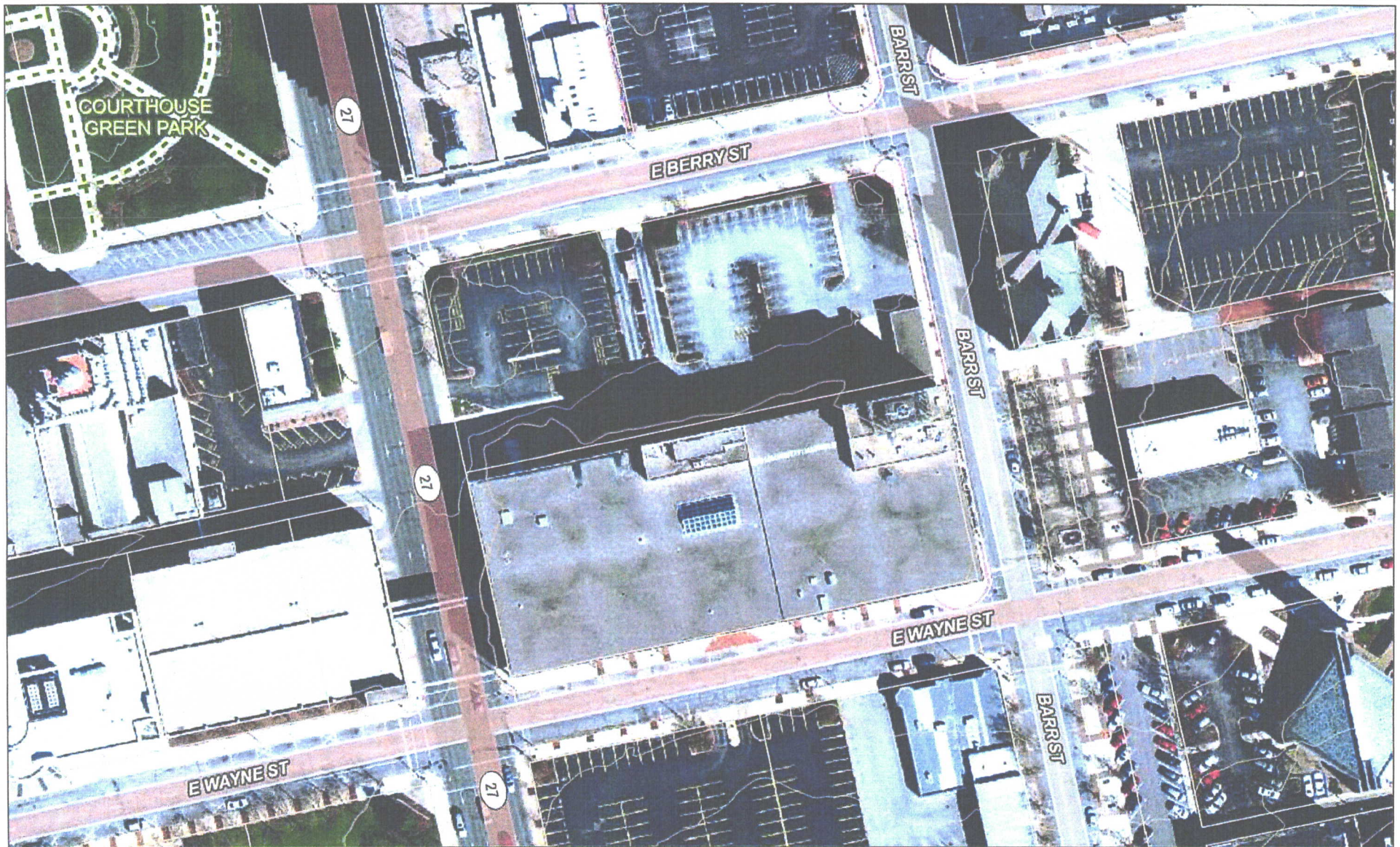


Although strict accuracy standards have been employed in the compilation of this map, Allen County does not warrant or guarantee the accuracy of the information contained herein and disclaims any and all liability resulting from any error or omission in this map.

© 2004 Board of Commissioners of the County of Allen
 North American Datum 1983
 State Plane Coordinate System, Indiana East
 Photos and Contours: Spring 2009



Date: 12/14/2012 1" = 1,000'

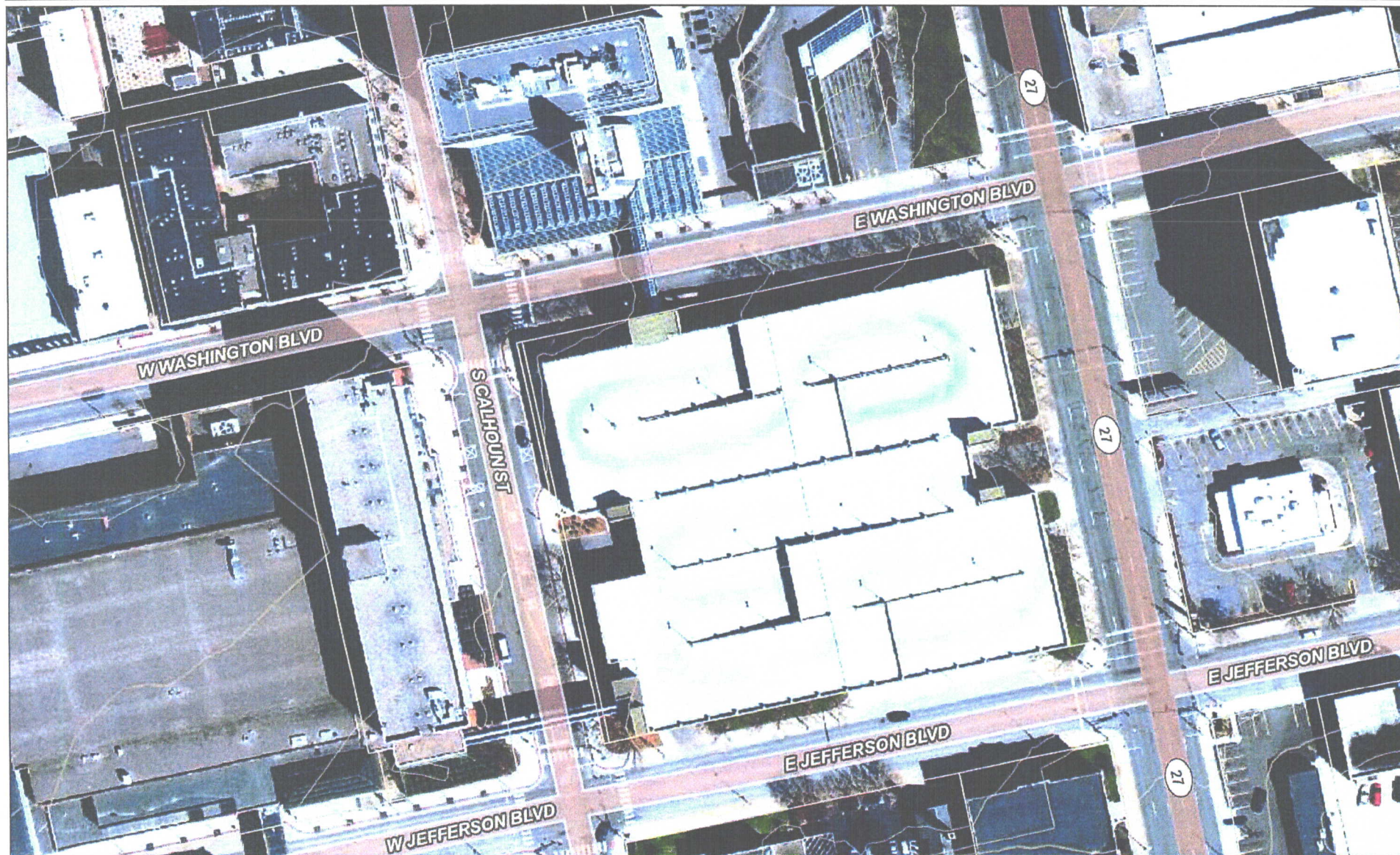


Although strict accuracy standards have been employed in the compilation of this map, Allen County does not warrant or guarantee the accuracy of the information contained herein and disclaims any and all liability resulting from any error or omission in this map.

© 2004 Board of Commissioners of the County of Allen
North American Datum 1983
State Plane Coordinate System, Indiana East
Photos and Contours: Spring 2009



Date: 12/11/2012 1" = 100'



Although strict accuracy standards have been employed in the compilation of this map, Allen County does not warrant or guarantee the accuracy of the information contained herein and disclaims any and all liability resulting from any error or omission in this map.

© 2004 Board of Commissioners of the County of Allen
North American Datum 1983
State Plane Coordinate System, Indiana East
Photos and Contours: Spring 2009



Date: 12/11/2012 1" = 100'



County Probation Office - 2211 Fairfield Avenue

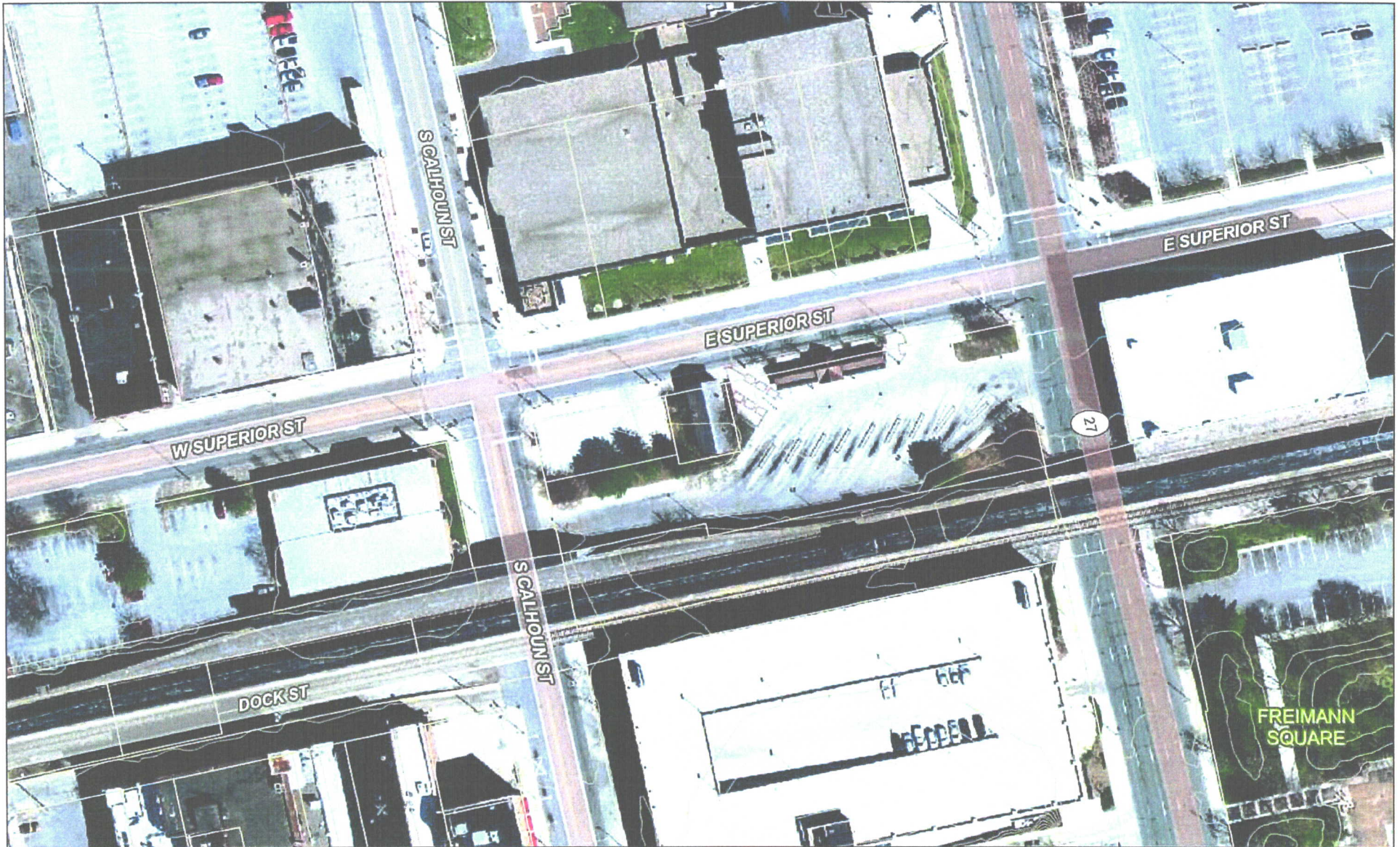


Although strict accuracy standards have been employed in the compilation of this map, Allen County does not warrant or guarantee the accuracy of the information contained herein and disclaims any and all liability resulting from any error or omission in this map.

© 2004 Board of Commissioners of the County of Allen
North American Datum 1983
State Plane Coordinate System, Indiana East
Photos and Contours: Spring 2009



Date: 12/16/2012 1" = 50'



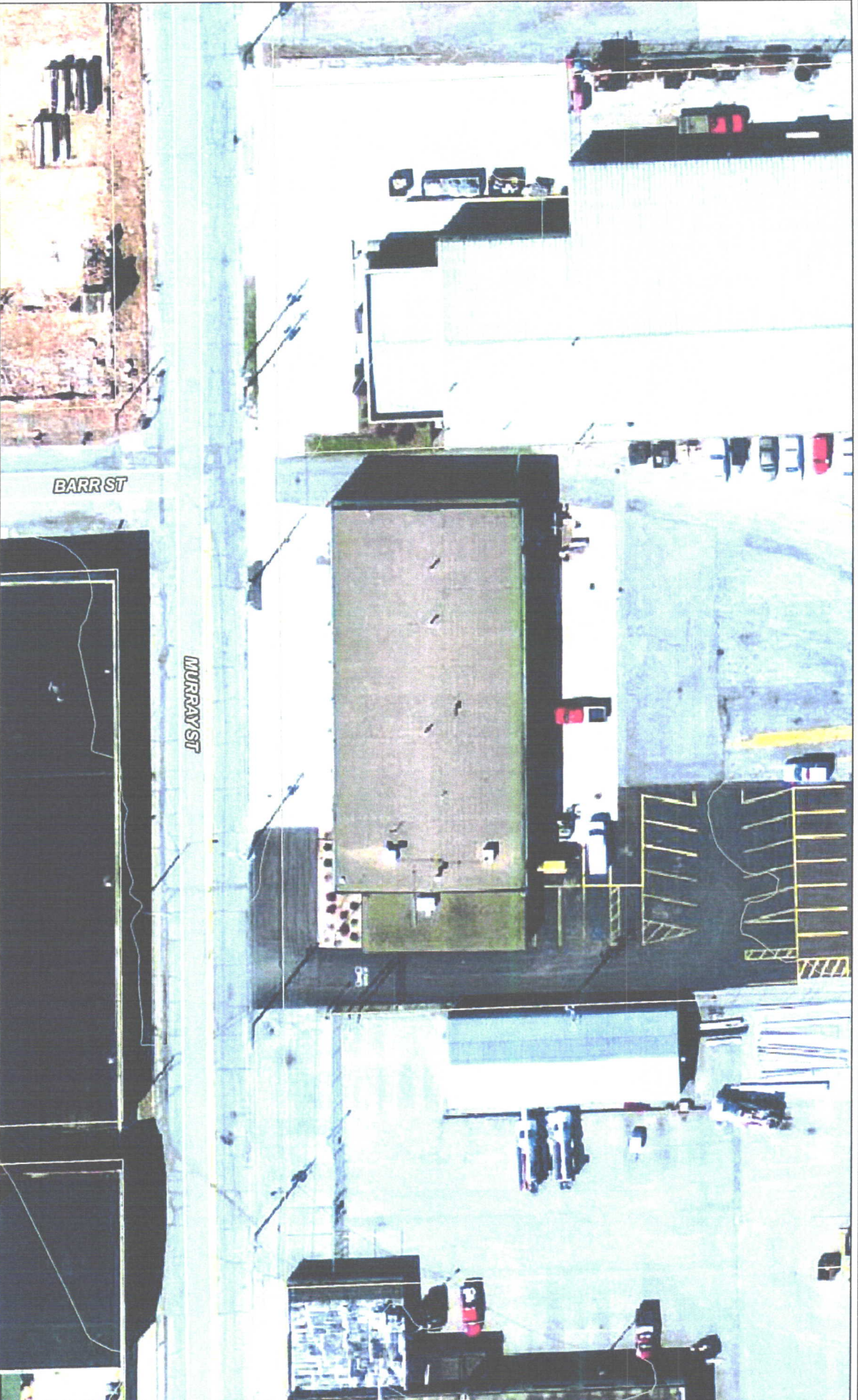


Although strict accuracy standards have been employed in the compilation of this map, Allen County does not warrant or guarantee the accuracy of the information contained herein and disclaims all liability resulting from any error or omission in this map.

© 2004 Board of Commissioners of the County of Allen
North American Datum 1983
State Plane Coordinate System, Indiana East
Photos and Contours: Spring 2009

 N
 Date: 12/14/2012 1" = 100'

Fire Engine Shop - 305 E Murray Street



Although strict accuracy standards have been employed in the compilation of this map, Allen County does not warrant or guarantee the accuracy of the information contained herein and does not assume any liability resulting from any error or omission in this map.

© 2004 Board of Commissioners of the County of Allen
North American Datum 1983
State Plane Coordinate System, Indiana East
Photos and Contours: Spring 2009

Date: 12/14/2012 1" = 50'



Fire Station #1 - 419 E Main Street



Although strict accuracy standards have been employed in the compilation of this map, the user assumes all responsibility for the accuracy of the information contained herein and disclaims any and all liability resulting from any error or omission in this map.

© 2004 Board of Commissioners of the County of Allen
 North American Datum 1983
 State Plane Coordinate System, Indiana East
 Photos and Contours: Spring 2009

Date: 12/14/2012 1" = 100'





Although strict accuracy standards have been employed in the compilation of this map, Allen County does not warrant or guarantee the accuracy of the information contained herein and disclaims any and all liability resulting from any error or omission in this map.

© 2004 Board of Commissioners of the County of Allen
North American Datum 1983
State Plane Coordinate System, Indiana East
Photos and Contours: Spring 2009



Date: 12/11/2012 1" = 50'

Fire Station #4 - 4130 Lahmeyer Road



Although strict accuracy standards have been employed in the compilation of this map, Allen County does not warrant or guarantee the accuracy of the information contained herein and disclaims any and all liability resulting from any error or omission in this map.

© 2004 Board of Commissioners of the County of Allen
 Allen County, Indiana 47303
 State Plane Coordinate System, Indiana East
 Photos and Contours: Spring 2009



Date: 12/14/2012 1" = 100'



Although strict accuracy standards have been employed in the compilation of this map, Allen County does not warrant or guarantee the accuracy of the information contained herein and disclaims any and all liability resulting from any error or omission in this map.

© 2004 Board of Commissioners of the County of Allen
 North American Datum 1983
 State Plane Coordinate System, Indiana East
 Photos and Contours: Spring 2009



Date: 12/14/2012 1" = 50'

Fire Station #6 - 1500 W Coliseum Blvd



Although strict accuracy standards have been employed in the compilation of this map, Allen County does not warrant or guarantee the accuracy of the information contained herein and disclaims any and all liability resulting from its use. This map is not to be used for legal purposes.

© 2004 Board of Commissioners of the County of Allen
State Plane Coordinate System, Indiana East
Photos and Contours: Spring 2009

N
Date: 12/14/2012 1" = 50'

Fire Station #7 - 1600 Lindenwood Avenue



Although strict accuracy standards have been employed in the compilation of this map, Allen County does not warrant or guarantee the accuracy of the information contained herein and disclaims any and all liability resulting from any error or omission in this map.

© 2004 Board of Commissioners of the County of Allen
North American Edition 1998
State Plane Coordinate System, Indiana East
Photos and Contours: Spring 2009

Date: 12/14/2012 1" = 50'

Fire Station #8 - 6035 Rothman Road



Although strict accuracy standards have been employed in the compilation of this map, Allen County does not warrant or guarantee the accuracy of the information contained herein and disclaims any and all liability resulting from any use of or omission in this map.

© 2004 Board of Commissioners of Allen County, North American Datum 1983
State Plane Coordinate System, Indiana East
Photos and Contours: Spring 2009



Date: 12/14/2012 1" = 50'

Fire Station #9 - 2530 E Pontiac Street



Although strict accuracy standards have been applied to this map, Allen County does not warrant or guarantee the accuracy of the information contained herein and disclaims any and all liability resulting from any error or omission in this map.

© 2004 Board of Commissioners of the County of Allen
North American Datum 1983
State Plane Coordinate System, Indiana East
Photos and Contours: Spring 2009



Date: 12/14/2012 1" = 50'

Fire Station #10 - 3110 N Anthony Blvd



Although strict accuracy standards have been employed in the compilation of this map, Allen County does not warrant or guarantee the accuracy of the map or any information contained therein and disclaims any liability for any error or omission in this map.

© 2004 Board of Commissioners of the County of Allen
North American Datum 1983
State Plane Coordinate System, Indiana East
Photos and Contours: Spring 2009

N
Date: 12/14/2012 1" = 100'

Fire Station #11 - 405 E Rudisill Blvd



Although strict accuracy standards have been employed in the compilation of this map, Allen County does not warrant or guarantee the accuracy of the information contained herein and disclaims any and all liability resulting from any use of the map. This map is the property of the Board of Commissioners of the County of Allen, Indiana. © 2004 Board of Commissioners of the County of Allen, Indiana. State Plane Coordinate System, Indiana East. Photos and Contours: Spring 2009.

Date: 12/14/2012 1" = 50'





Fire Station #13 - 6727 N Clinton Street



Although strict accuracy standards have been employed in the compilation of this map, Allen County does not warrant or guarantee the accuracy of the information contained herein and disclaims any and all liability resulting from any error or omission in this map.

© 2004 Board of Commissioners of Allen County, Indiana
 State Plane Coordinate System, Indiana East
 Photos and Contours: Spring 2009



Date: 12/14/2012 1" = 100'

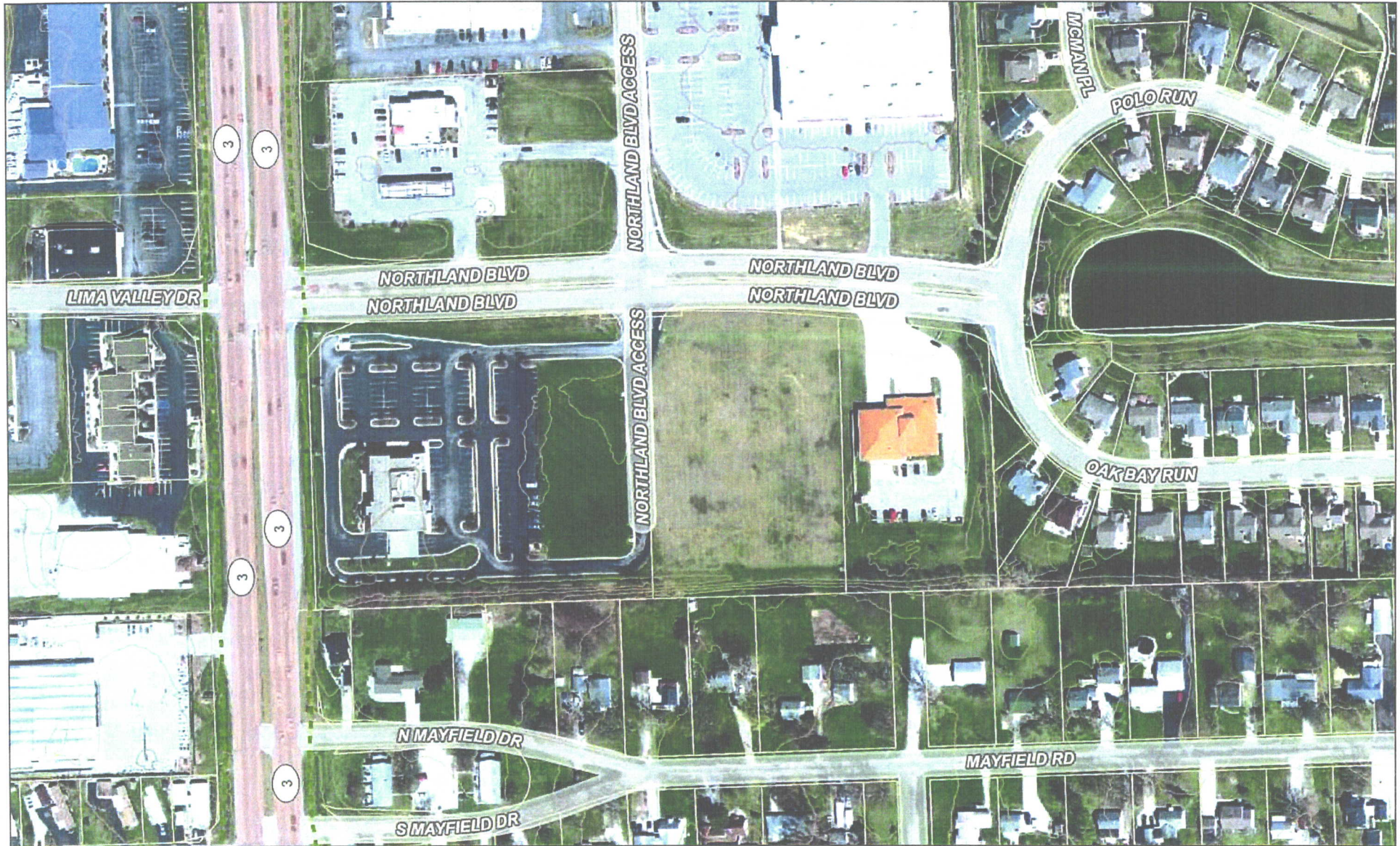


Although strict accuracy standards have been employed in the compilation of this map, Allen County does not warrant or guarantee the accuracy of the information contained herein and disclaims any and all liability resulting from any error or omission in this map.

© 2004 Board of Commissioners of the County of Allen
North American Datum 1983
State Plane Coordinate System, Indiana East
Photos and Contours: Spring 2009



Date: 12/14/2012 1" = 50'





Although strict accuracy standards have been employed in the compilation of this map, Allen County does not warrant or guarantee the accuracy of the information contained herein and disclaims any and all liability resulting from any error or omission in this map.
© 2004 Board of Commissioners of the County of Allen
North American Datum 1983
State Plane Coordinate System, Indiana East
Photos and Contours: Spring 2009



Date: 12/14/2012 1" = 100'

Fire Station #17 - 1910 Getz Road



Although strict accuracy standards have been employed in the compilation of this map, Allen County does not warrant or guarantee the accuracy of the information contained herein and disclaims any and all liability resulting from any error or omission in this map.

© 2004 Board of Commissioners of the County of Allen
North American Datum 1983
State Plane Coordinate System, Indiana East
Photos and Contours: Spring 2009



Date: 12/14/2012 1" = 50'

Fire Station #18 - 10805 Liberty Mills Road



Although strict accuracy standards have been employed in the compilation of this map, Allen County does not warrant or guarantee the accuracy of the information contained herein and disclaims any and all liability resulting from any error or omission in this map.

© 2004 Board of Commissioners of the County of Allen
 North American Datum 1983
 State Plane Coordinate System, Indiana East
 Photos and Contours: Spring 2009

Date: 12/14/2012 1" = 100'



Although strict accuracy standards have been employed in the compilation of this map, Allen County does not warrant or guarantee the accuracy of the information contained herein and disclaims any and all liability resulting from any error or omission in this map.

© 2004 Board of Commissioners of the County of Allen
North American Datum 1983
State Plane Coordinate System, Indiana East
Photos and Contours: Spring 2009



Date: 12/17/2012 1" = 50'

Fleet Management - 1705 S Lafayette Street



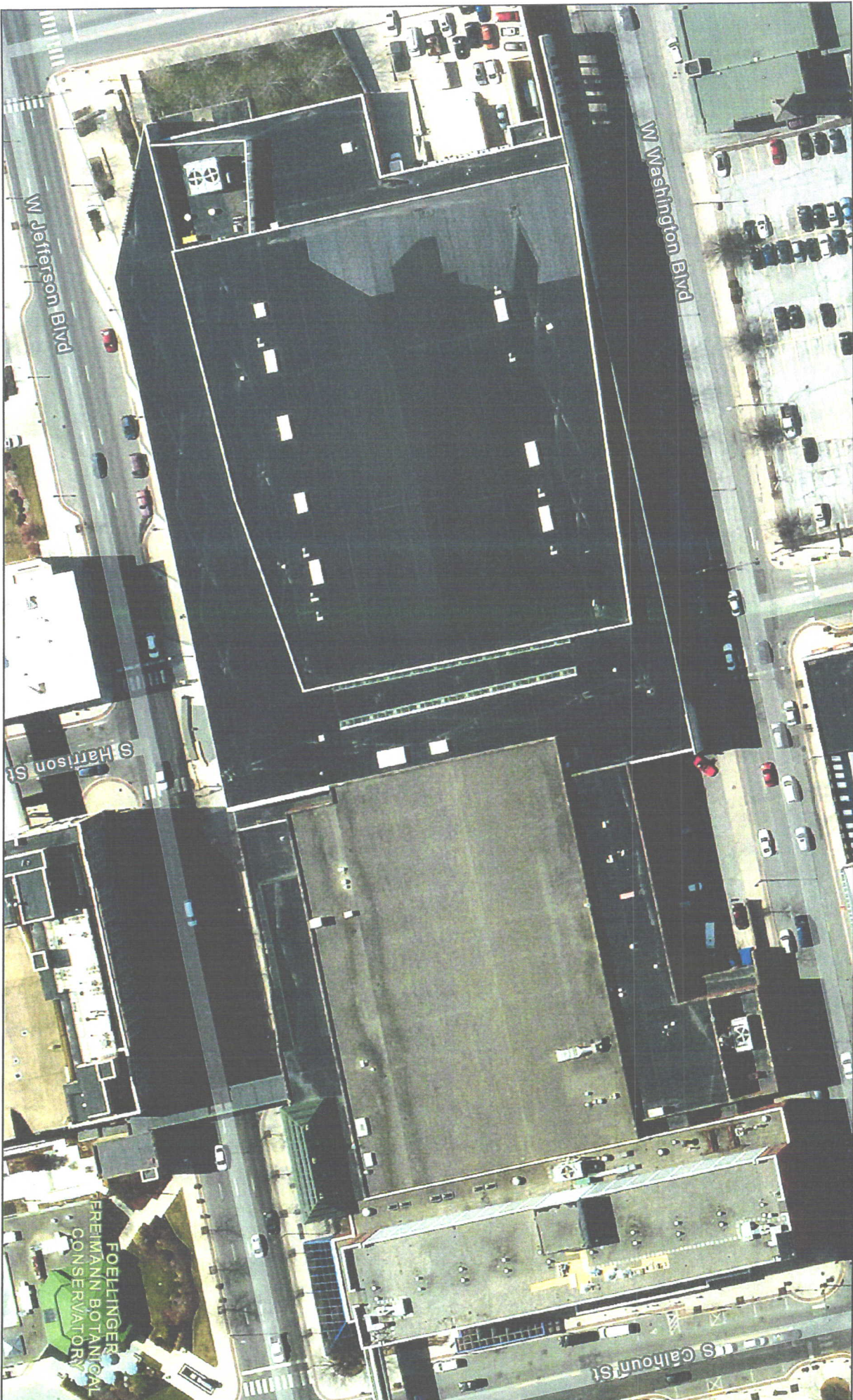
Although strict accuracy standards have been employed in the compilation and digitization of this map, the accuracy of the information contained herein and disclaims any and all liability resulting from any error or omission in this map.

© 2004 Board of Commissioners of the County of Allen
North American Datum 1983
State Plane Coordinate System, Indiana East
Photos and Contours: Spring 2009

Date: 12/14/2012 1" = 200'



Grand Wayne-219 W Washington Boulevard

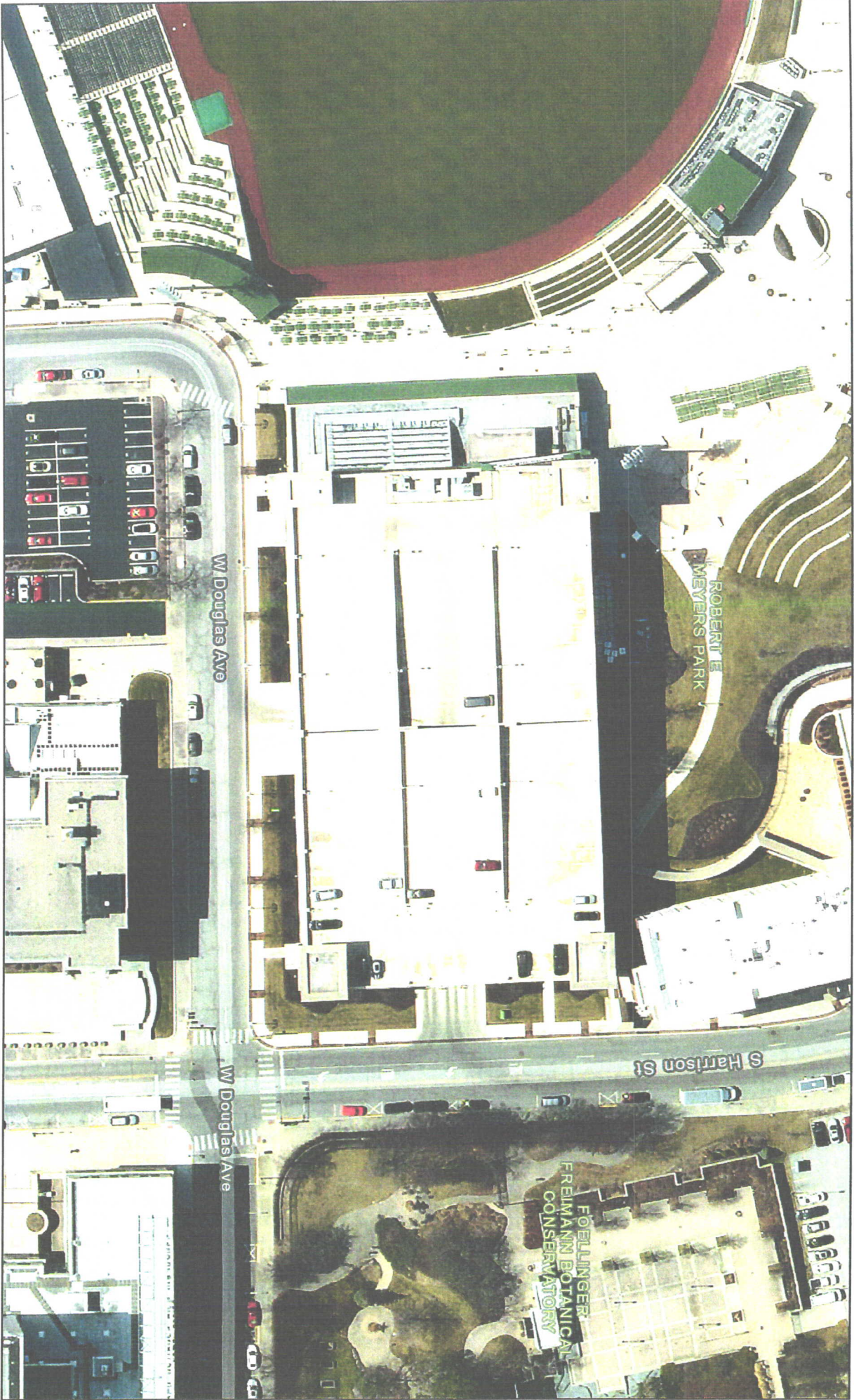


Although strict accuracy standards have been employed in the compilation of this map, Allen County does not warrant or guarantee the accuracy of the information contained herein and disclaims any and all liability resulting from any error or omission in this map.

© 2004 Board of Commissioners of the County of Allen
North American Datum 1983
State Plane Coordinate System, Indiana East

N
Date: 2/12/2019 1" = 83'

Harrison Garage-1220 S Harrison Street



Although strict accuracy standards have been employed in the compilation of this map, Allen County does not warrant, guarantee, or assume any liability for errors, omissions, or inaccuracies contained herein and disclaims any and all liability resulting from any error or omission in this map.

© 2004 Board of Commissioners of the County of Allen
North American Datum 1983
State Plane Coordinate System, Indiana East



Date: 2/12/2019 1" = 83'



Parkview Field - 1301 Ewing Street



Although strict accuracy standards have been employed in the compilation of this map, Allen County does not warrant or guarantee the accuracy of the information contained herein and does not assume any liability for any error or omission in this map.

© 2004 Board of Commissioners of the County of Allen
 North American Datum 1983
 State Plane Coordinate System, Indiana East
 Photos and Contours: Spring 2009

Date: 12/14/2012 1" = 200'





Although strict accuracy standards have been employed in the compilation of this map, Allen County does not warrant or guarantee the accuracy of the information contained herein and disclaims any and all liability resulting from any error or omission in this map.

© 2004 Board of Commissioners of the County of Allen
North American Datum 1983
State Plane Coordinate System, Indiana East
Photos and Contours: Spring 2009



Date: 12/14/2012 1" = 400'

Radio Shop - 1103 E Coliseum Blvd



Although strict accuracy standards have been employed in the compilation of this map, Allen County does not warrant or guarantee the map's accuracy, completeness, or reliability, and disclaims any and all liability resulting from any error or omission in this map.

© 2004 Board of Commissioners of the County of Allen
North American Datum 1983
State Plane Coordinate System, Indiana East
Photos and Contours: Spring 2009



Date: 12/17/2012 1" = 100'



Although strict accuracy standards have been employed in the compilation of this map, Allen County does not warrant or guarantee the accuracy of the information contained herein and disclaims any and all liability resulting from any error or omission in this map.

© 2004 Board of Commissioners of the County of Allen
North American Datum 1983
State Plane Coordinate System, Indiana East



Date: 2/12/2019 1" = 42'

Science Central Museum - 1950 N Clinton Street



Although strict accuracy standards have been employed in the compilation of this map, Allen County does not warrant or guarantee the accuracy of the information contained herein and disclaims any and all liability resulting from any use of the map.

© 2004 Board of Commissioners of the County of Allen, North American Datum 1983
 State Plane Coordinate System, Indiana East
 Photos and Contours: Spring 2009



Date: 12/18/2012 1" = 100'



Although strict accuracy standards have been employed in the compilation of this map, the County of Allen warrants no liability for any errors or omissions contained herein and disclaims any and all liability resulting from any error or omission in this map.

© 2004 Board of Commissioners of the County of Allen
 North American Datum 1983
 State Plane Coordinate System, Indiana East
 Photos and Contours: Spring 2009


 N
 Date: 12/14/2012 1" = 100'

Signal Shop - 1730 S Lafayette Street



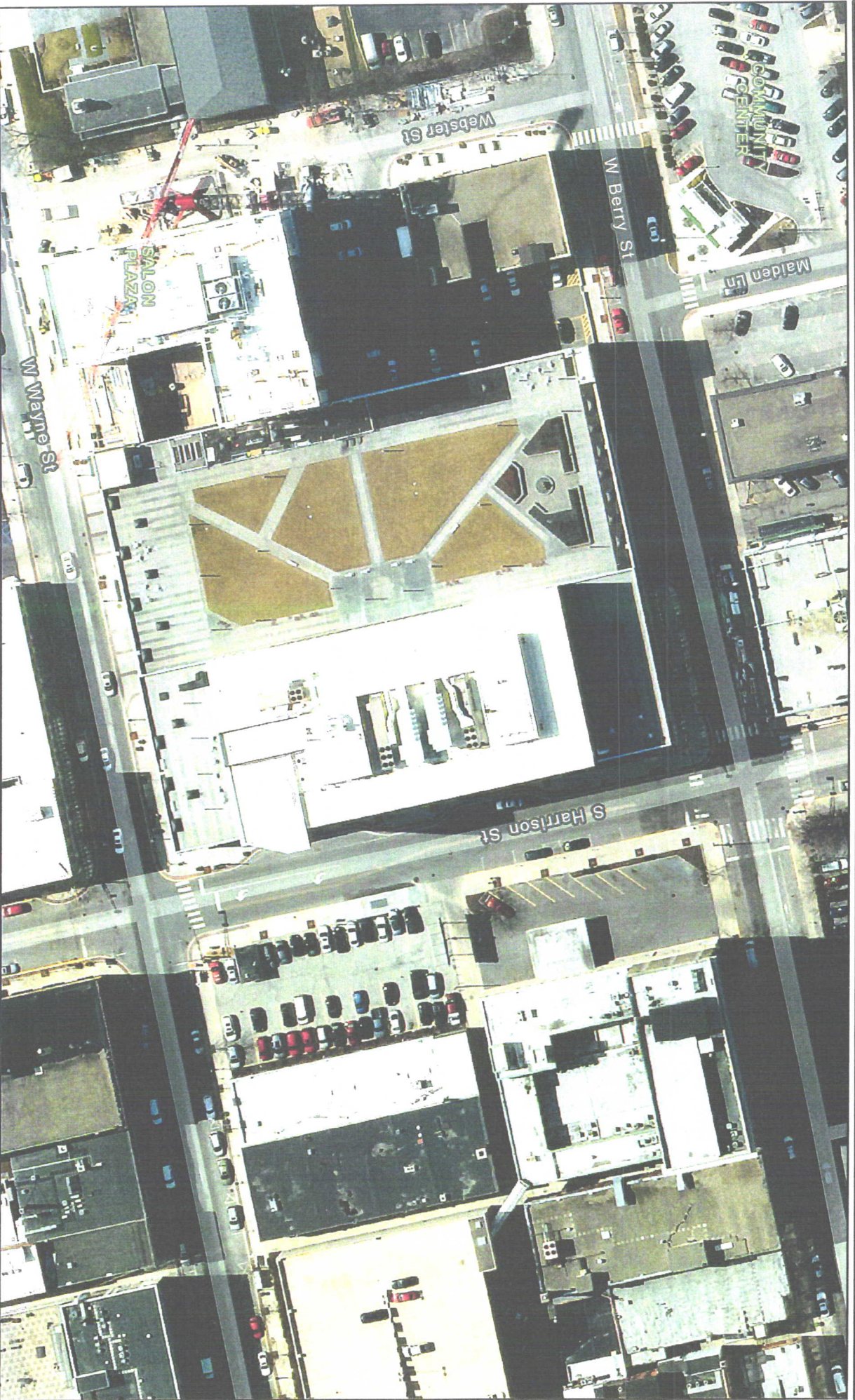
Although strict accuracy standards have been employed in the compilation of this map, Allen County does not warrant or guarantee the accuracy, completeness, or reliability of the data and all liability resulting from any error or omission in this map.

© 2004 Board of Commissioners of the County of Allen
 North American Datum 1983
 State Plane Coordinate System, Indiana East
 Photos and Contours: Spring 2009

Date: 12/14/2012 1" = 100'



Skyline Garage-221 W Berry Street



Although strict accuracy standards have been employed in the compilation of this map, Allen County does not warrant or guarantee the accuracy of the information contained herein and disclaims any and all liability resulting from any error or omission in this map.

© 2004 Board of Commissioners of the County of Allen
North American Datum 1983
State Plane Coordinate System, Indiana East



Date: 2/12/2019 1" = 83'





Although strict accuracy standards have been employed in the compilation of this map, Allen County does not warrant or guarantee the accuracy of the information contained herein and disclaims any and all liability resulting from any error or omission in this map.

© 2004 Board of Commissioners of the County of Allen
North American Datum 1983
State Plane Coordinate System, Indiana East
Photos and Contours: Spring 2009



Date: 12/14/2012 1" = 50'



Although strict accuracy standards have been employed in the compilation of this map, Allen County does not warrant or guarantee the accuracy of the information contained herein and disclaims any and all liability resulting from any error or omission in this map.

© 2004 Board of Commissioners of the County of Allen
North American Datum 1983
State Plane Coordinate System, Indiana East
Photos and Contours: Spring 2009



Date: 12/14/2012 1" = 100'



Although strict accuracy standards have been employed in the compilation of this map, the City of Allen does not warrant the accuracy of the information contained herein and disclaims any and all liability resulting from any error or omission in this map.

© 2004 Board of Commissioners of the County of Allen
North American Datum 1983
State Plane Coordinate System, Indiana East
Photos and Contours: Spring 2009



Date: 12/14/2012 1" = 50'

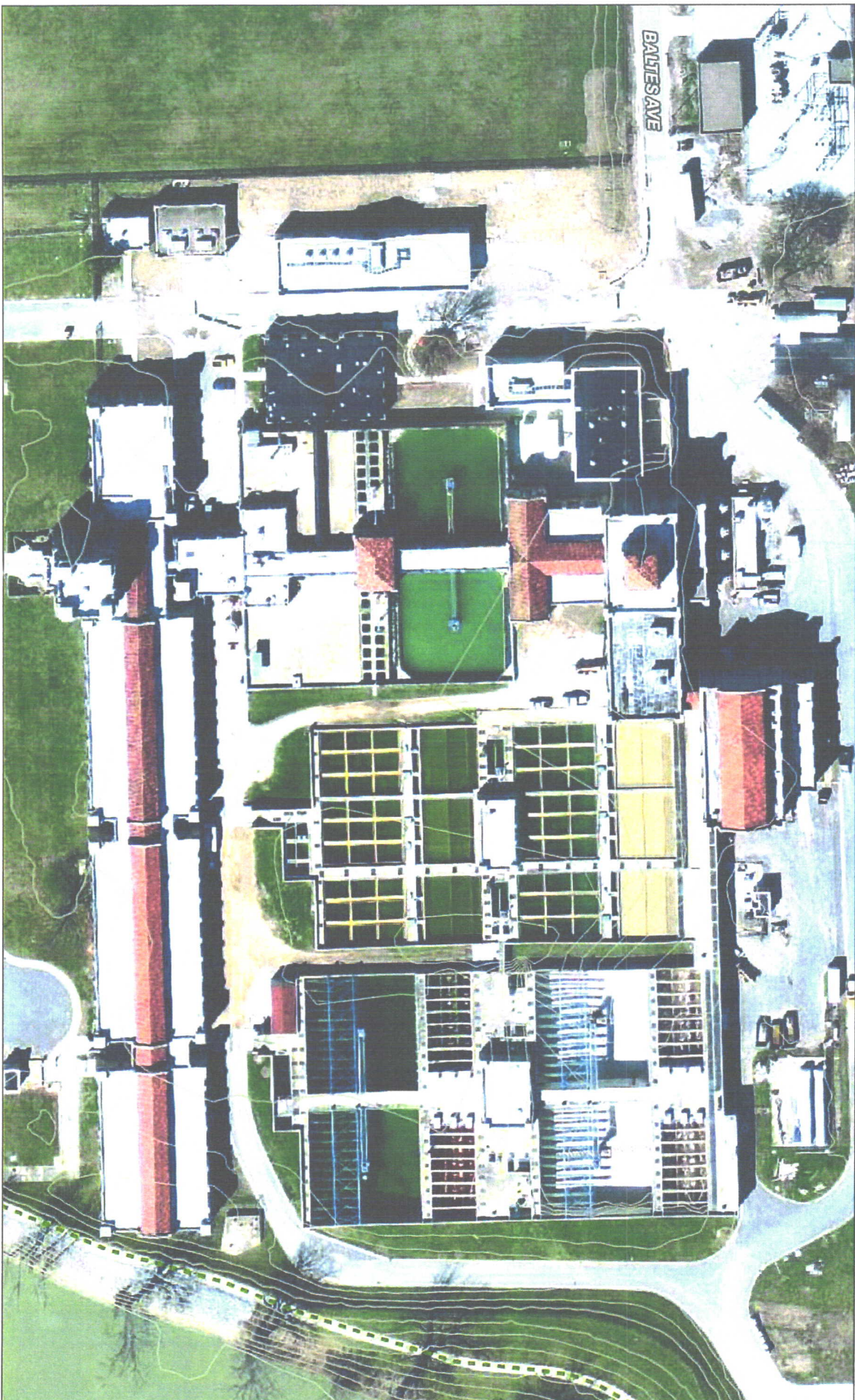


Although strict accuracy standards have been employed in the compilation of this map, Allen County does not warrant or guarantee the accuracy of the information contained herein and disclaims any and all liability resulting from any error or omission in this map.

© 2004 Board of Commissioners of the County of Allen
 North American Datum 1983
 State Plane Coordinate System, Indiana East
 Photos and Contours: Spring 2009

 N
 Date: 12/14/2012 1" = 200'

Water Filtration Plant - 1100 Griswold Drive



Although strict accuracy standards have been employed in the compilation of this map, Allen County does not warrant or guarantee the accuracy of the information contained herein and disclaims any and all liability resulting from any error or omission in this map.

© 2004 Board of Commissioners of the County of Allen
 North American Datum 1983
 State Plane Coordinate System, Indiana East
 Photos and Contours: Spring 2009



Date: 12/14/2012 1" = 100'



Although strict accuracy standards have been employed in the compilation of this map, Allen County does not warrant or guarantee the accuracy of the information contained herein and disclaims any and all liability resulting from any error or omission in this map.
© 2004 Board of Commissioners of the County of Allen North American Datum 1983
State Plane Coordinate System, Indiana East
Photos and Contours: Spring 2009

Date: 12/17/2012 1" = 400'



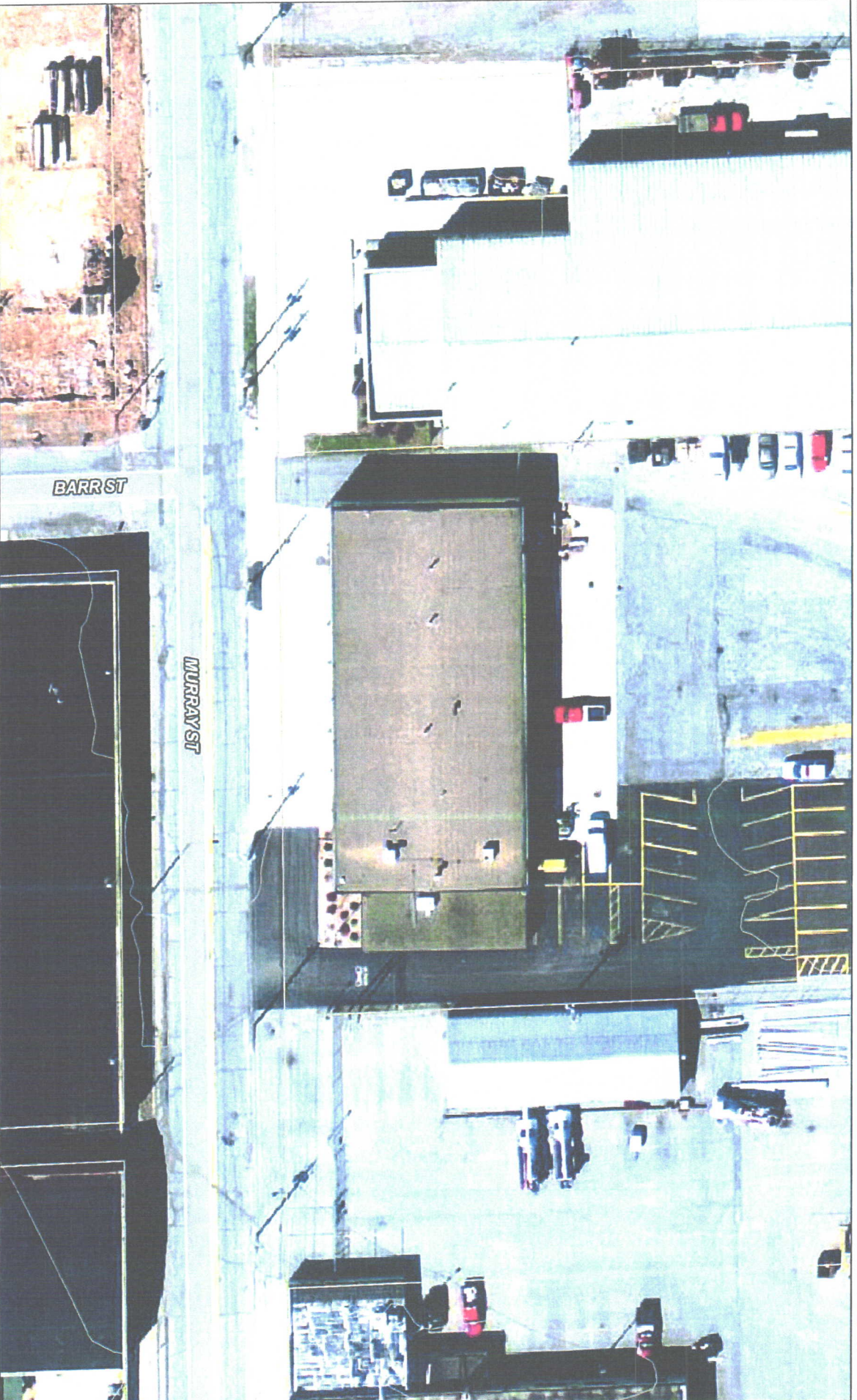
Water Pollution Control Plant - 2601 Dwenger Avenue



Although strict accuracy standards have been employed in the compilation of this map, Allen County does not warrant or guarantee the accuracy of the information contained herein and does not accept liability resulting from any error or omission in this map.

© 2004 Board of Commissioners of the County of Allen
North American Datum 1983
State Plane Coordinate System, Indiana East
Photos and Contours: Spring 2009

Date: 12/14/2012 1" = 400'



Although strict accuracy standards have been employed in the compilation of this map, Allen County does not warrant or guarantee the accuracy of the information contained herein and does not accept any liability resulting from any error or omission in this map.

© 2004 Board of Commissioners of the County of Allen
North American Datum 1983
State Plane Coordinate System, Indiana East
Photos and Contours: Spring 2009

Date: 12/14/2012 1" = 50'





Although strict accuracy standards have been employed in the compilation of this map, Allen County does not warrant or guarantee the accuracy of the information contained herein and disclaims any and all liability resulting from any error or omission in this map.

© 2004 Board of Commissioners of the County of Allen
North American Datum 1983
State Plane Coordinate System, Indiana East
Photos and Contours: Spring 2009



Date: 12/14/2012 1" = 50'



Although strict accuracy standards have been employed in the compilation of this map, Allen County does not warrant or guarantee the accuracy of the information contained herein and disclaims any and all liability resulting from any error or omission in this map.

© 2004 Board of Commissioners of the County of Allen
North American Datum 1983
State Plane Coordinate System, Indiana East
Photos and Contours: Spring 2009



Date: 12/14/2012 1" = 200'